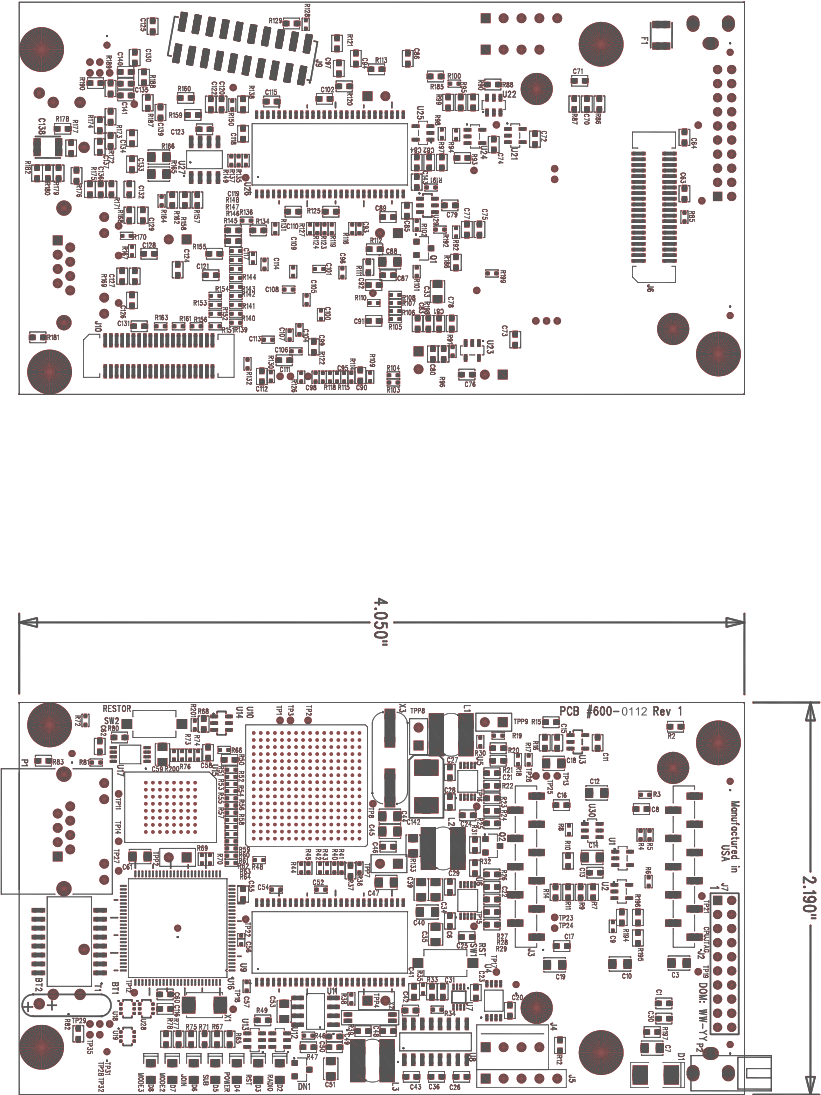


R E V I S I O N S				1
ECO	REV	DESCRIPTION	DATE	APPROVED
000680	1	INITIAL RELEASE		

- NOTES: (UNLESS OTHERWISE SPECIFIED)
- ASSEMBLE AND INSPECT IN ACCORDANCE WITH IPC STANDARD IPC-A-610-C.
  - SQUARE PAD DENOTES PIN ONE OF CONNECTORS AND HEADERS.
  - INSTALL LABELS IN ACCORDANCE WITH DUST DRAWING 895-0003 AND 895-0004.
  - MAXIMUM COMPONENT HEIGHT: .38 +/- .01.
  - DO NOT STUFF: B71, B72, C26, 36, 43, 70, 86, 93-95, 98, 120, 137, 138, 141, F1, J4, 5, 9, L3, P1, 2, R7, 10, 11, 18, 35, 37, 39, 50, 86, 88, 90, 94, 95, 101, 106, 107, 116, 118, 122-125, 134, 148, 155, 168, 169, 177-182, 185, 186, 190, 194, 195, SW1, 2, T1, U1, U8, U22, U24.
  - PACKAGE AND PROTECT FROM DAMAGE AND DETERIORATION.
  - THIS IS A ROHS COMPLIANT DESIGN. ASSEMBLY PROCESSING SHALL BE ROHS COMPLIANT.



UNLESS OTHERWISE SPECIFIED, DIMENSIONS ARE IN INCHES.		APPROVALS	DATE	SEE SEPARATE BOM, 700-0158	
TOLERANCES ARE:		DRAWN BY: scausuga	11-15-08	DUST NETWORKS	
FRACTIONS: .XX ± .01		CHECKED		TITLE: PCA ASSY DWG, CONTROLLER MODULE, FIR	
ANGLES: 0° ± .005		ENGINE		FSCM NO. 705-0158	
MATERIAL: -		ISSUED		DWG NO. 705-0158	
FINISH: -				REV. 1	
APPLICATION		DO NOT SCALE DRAWING		SCALE: NONE	
NEXT ASSY USED ON		CONTRACT NO.		SHEET 1 OF 1	